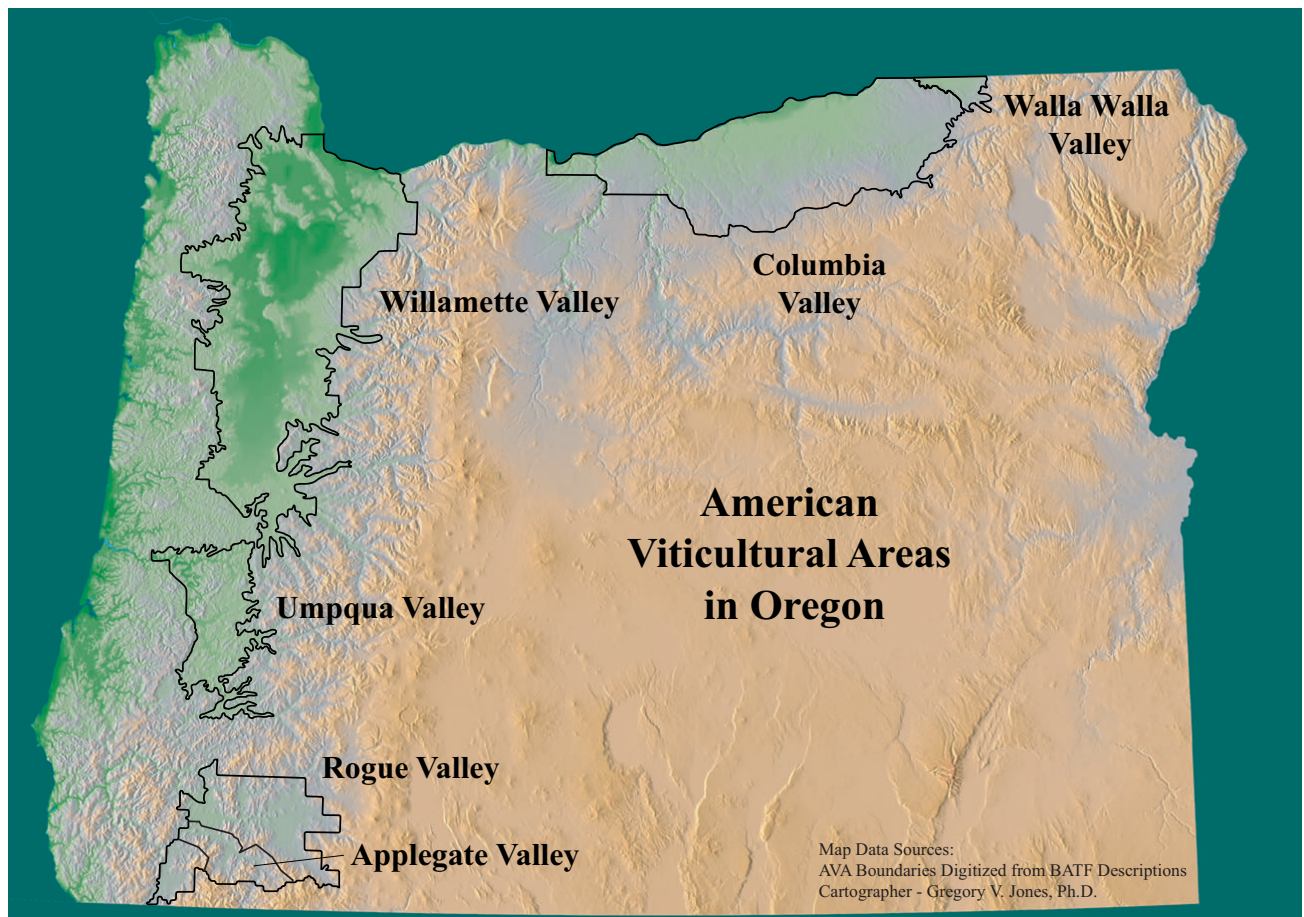
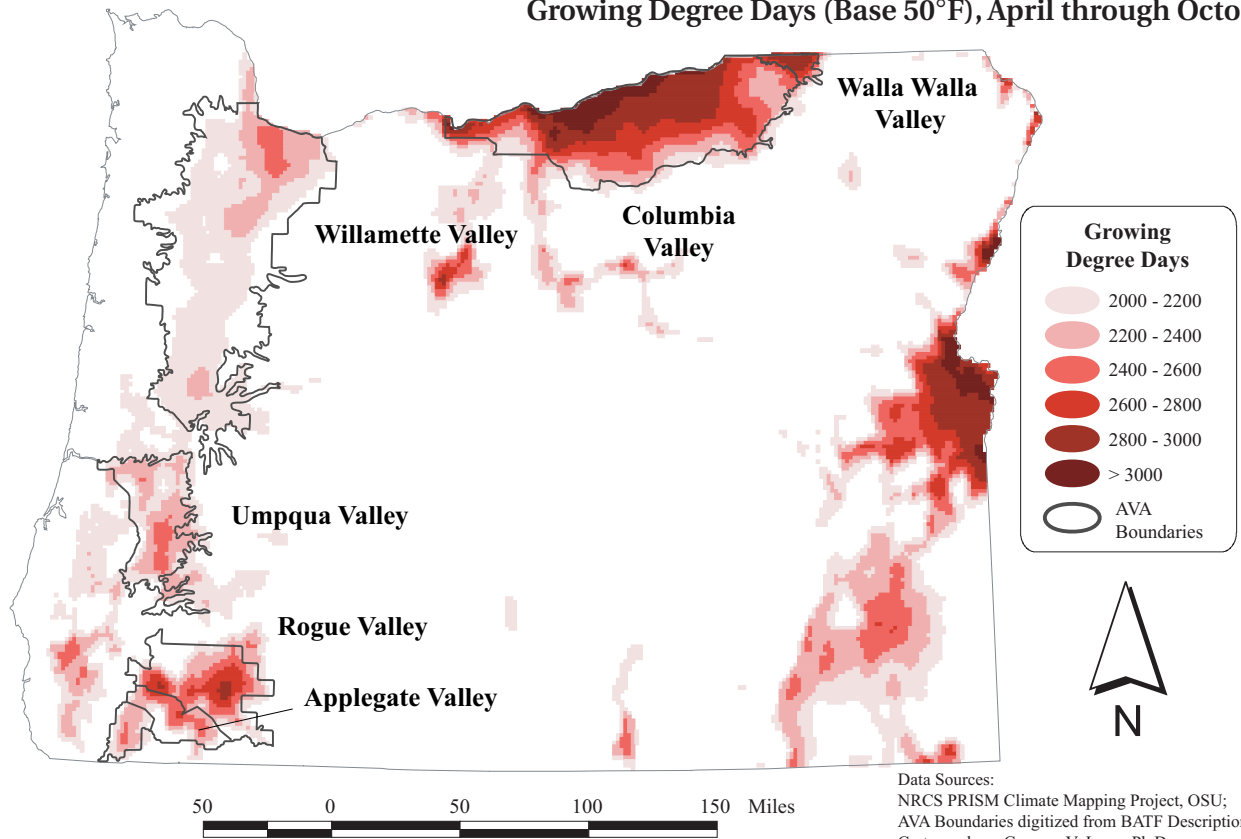


Growing Degree Days (Base 50°F), April through October



Willamette Valley American Viticultural Area

Map Legend:

- AVA Boundary
- Major Roadways
- Rivers and Streams
- Lakes and Reservoirs
- County Boundary

Map Data Sources:
 Oregon Geospatial Data Clearinghouse
 AVA Boundary Digitized from BATF Descriptions
 Cartographer - Gregory V. Jones, Ph.D.

Scale: 10 0 10 20 Miles

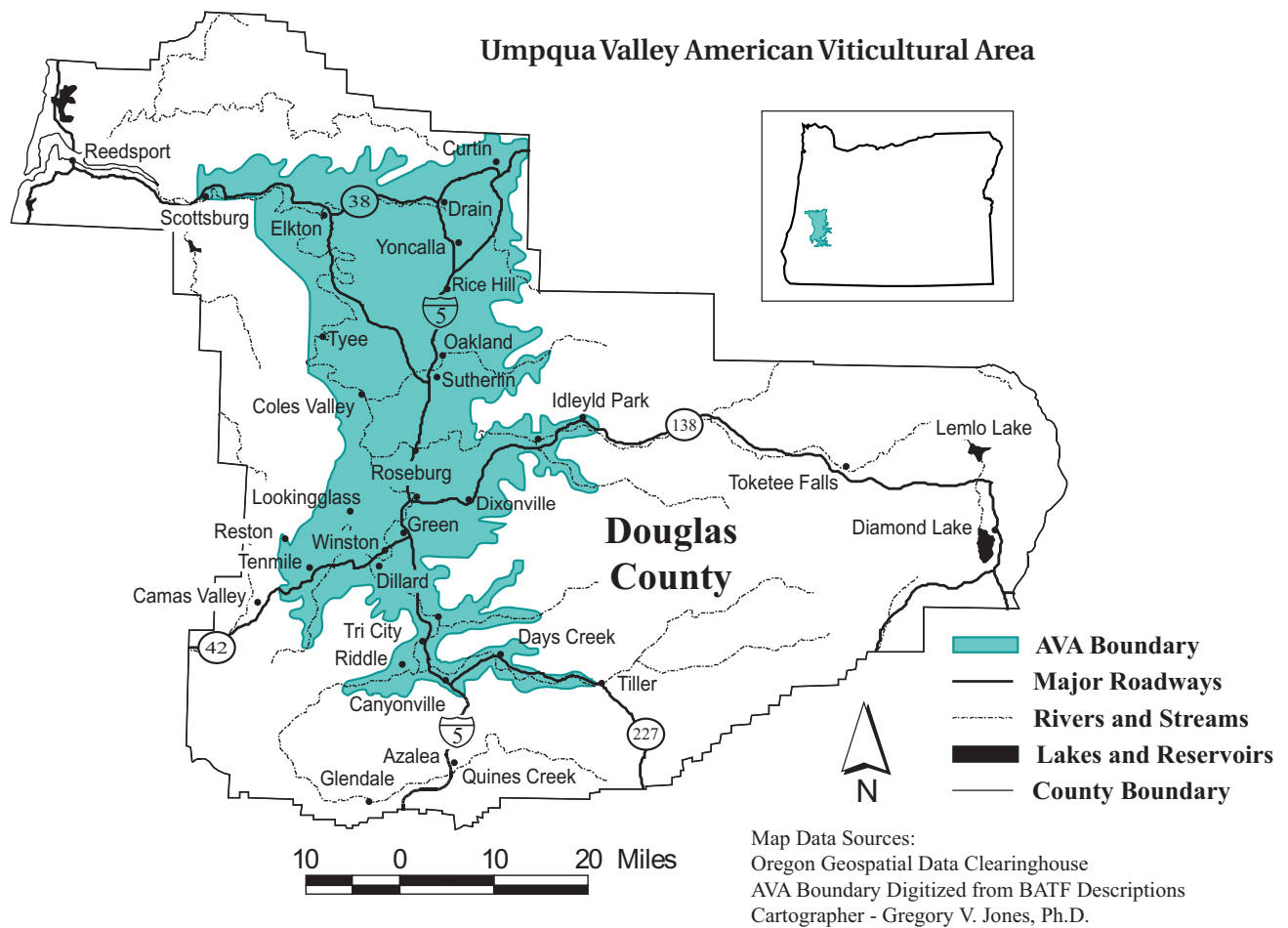
Columbia Valley AVA

Walla Walla Valley AVA

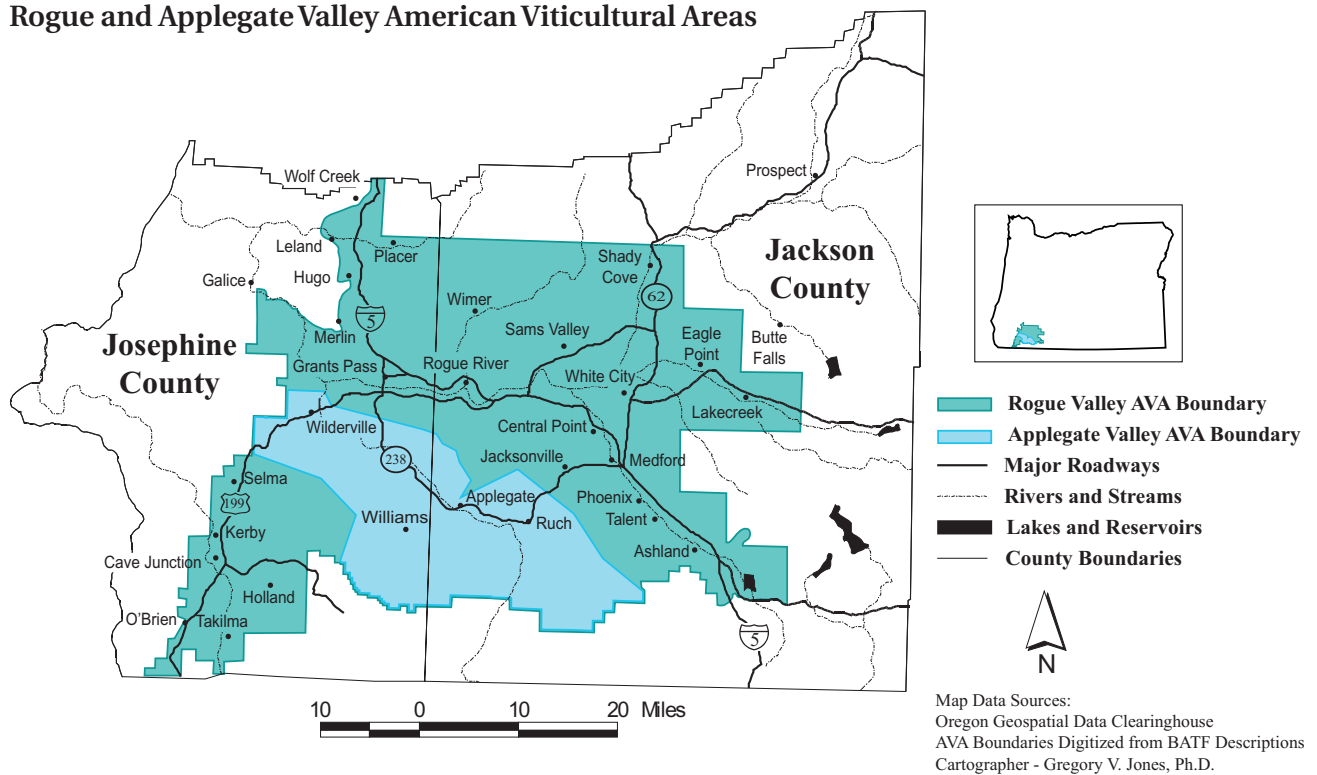
Legend:

- Columbia Valley AVA Boundary
- Walla Walla Valley AVA Boundary
- Major Roadways
- Rivers and Streams
- Lakes and Reservoirs
- County Boundaries

Map Data Sources:
 Oregon Geospatial Data Clearinghouse
 AVA Boundaries Digitized from BATF Descriptions
 Cartographer - Gregory V. Jones, Ph.D.



Rogue and Applegate Valley American Viticultural Areas





Early spring in a vineyard on a high hillside in the Willamette Valley. (Photo by Dai Crisp)



Post-harvest fall colors in a Willamette Valley vineyard looking east. (Photo by Dai Crisp)



Early morning light on upright vertical, heat trained, cane pruned Pinot noir. (Photo by Dai Crisp)



Close view of the fruit zone of a Pinot noir vine. Clean morning sunlight exposure due to leaf removal in the east-facing fruit area. (Photo by Dai Crisp)



Pinot noir nearing harvest, covered with morning dew. (Photo by Dai Crisp)



Pinot noir on a Scott Henry trellis. (Photo by Dai Crisp)



Pommard Pinot noir close to harvest. (Photo by Dai Crisp)



*Tractor pulling harvest bins
between two vineyard blocks.
(Photo by Dai Crisp)*



*Workers tying down canes on a
cool spring day. (Photo by Dai
Crisp)*



*Workers pulling brush out of the
trellis in an upright vertical
block of Pinot gris. (Photo by
Dai Crisp)*

Early spring management, showing both weeds burned with a propane burner (left) and weeds mowed close (center). (Photo by Dai Crisp)



Harvester picking Gewürtztraminer in a high wire hanging trellis. (Photo by Dai Crisp)



Workers pulling up catchwires and tucking in the shoots in a vertically positioned trellis system. (Photo by Dai Crisp)